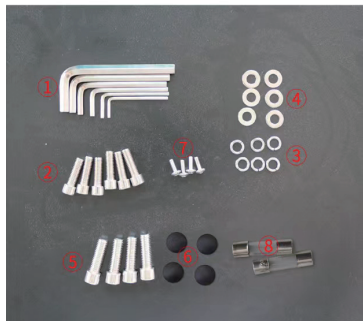


组合台简易安装说明

配件包展示

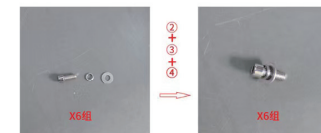


- 1 Internal hexagon wrench (3 / 4 / 5 / 6 / 8 / 2 / 10)
- 2 3 M 8x 25 inner
- 3 4 hexagonal screw X 6
- 4 5 M 10x 35 internal hexagonal screw x 4
- 5 6 Rubber cover
- 6 7 M 4x 12 round head
- 7 8 5A spare fuse x

One Install foot pedal



1. Pull your hands out in the drawing position and remove the side baffle. Set aside the baffle. (Tagged as shown)



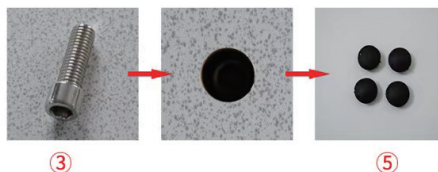
2. Find out the foot iron frame and assemble 6 sets of M8 screws from the accessory package

注意踏板方向

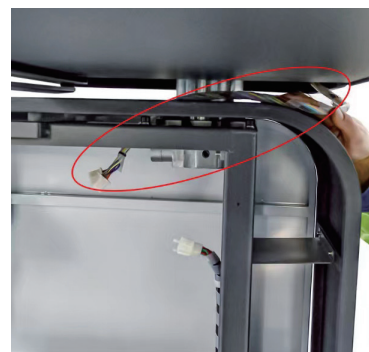


3. Take out the 4 M4 screws as shown in the figure, and screw them into the red ring position to complete the pedal installation.

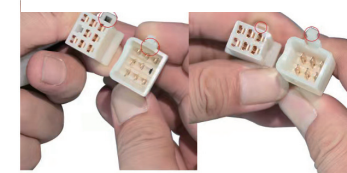
Two Install table top and wire



1. Move the combination table top to the main machine of the combination table, and align it with the screw hole. **Do not put the power cable into the hole**, and pull it out from the side. Then remove 4 rubber cover and put 4 M10 screw, cover the hole with rubber cover.



2. Put the power cord of the table from under the table into the chamber, like show in the picture.



3. Power cable must be in correct connection, **9 holes to 9 holes, 6 holes to 6 holes**, as shown in the photo. Please make sure they connected well, otherwise the motor will have no power.

Three Tube top installation



1. Plug in and raise the phoropter arm to highest position.



2. Remove 4pcs M6 screw, **keep it**.



3. Connect power cable



4. Connect 2 part into correct position, and screw in 4 pcs M6 screws (**Please note: do not tighten them**)



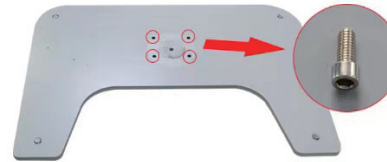
5. Rotate phoropter arm, when phoropter holder is parallel with the table (see the photo), tighten 4 pcs M6 screw.

Four Install main body



1. Put main body metal cover back.

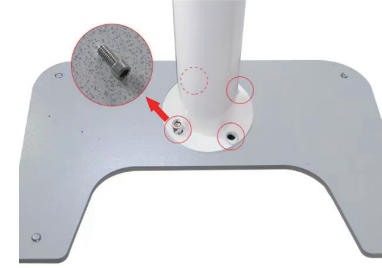
Five Install projector stand



1. Remove the 4pcs M6 screw, keep it.



2. Find correct part, connect them and adjust power cable into correct position. Use back up M6 screw tighten them.



3. Connect projector stand bar with its base, tighten 4 pcs M6 screw.

Six Install lifting chair



Done



1. Install 4pcs rubber foot



2. Tighten 4 screw of foot pedal from down side



3. Remove 4 screw nut from down side of the chair



4. Aim all screw to the correct point



5. Find screw nut from step 3, tighten them back here.



6. Plug all cable

